

Testing for Toxins in Natural History Collections at the Pratt Museum

Savanna Bradley and Holly Cusack-McVeigh

Museums Alaska and Alaska Historical Society
Joint Annual Conference
Sitka, Alaska

October 2012



“What’s that white stuff?”



XRF Training Session at the Pratt



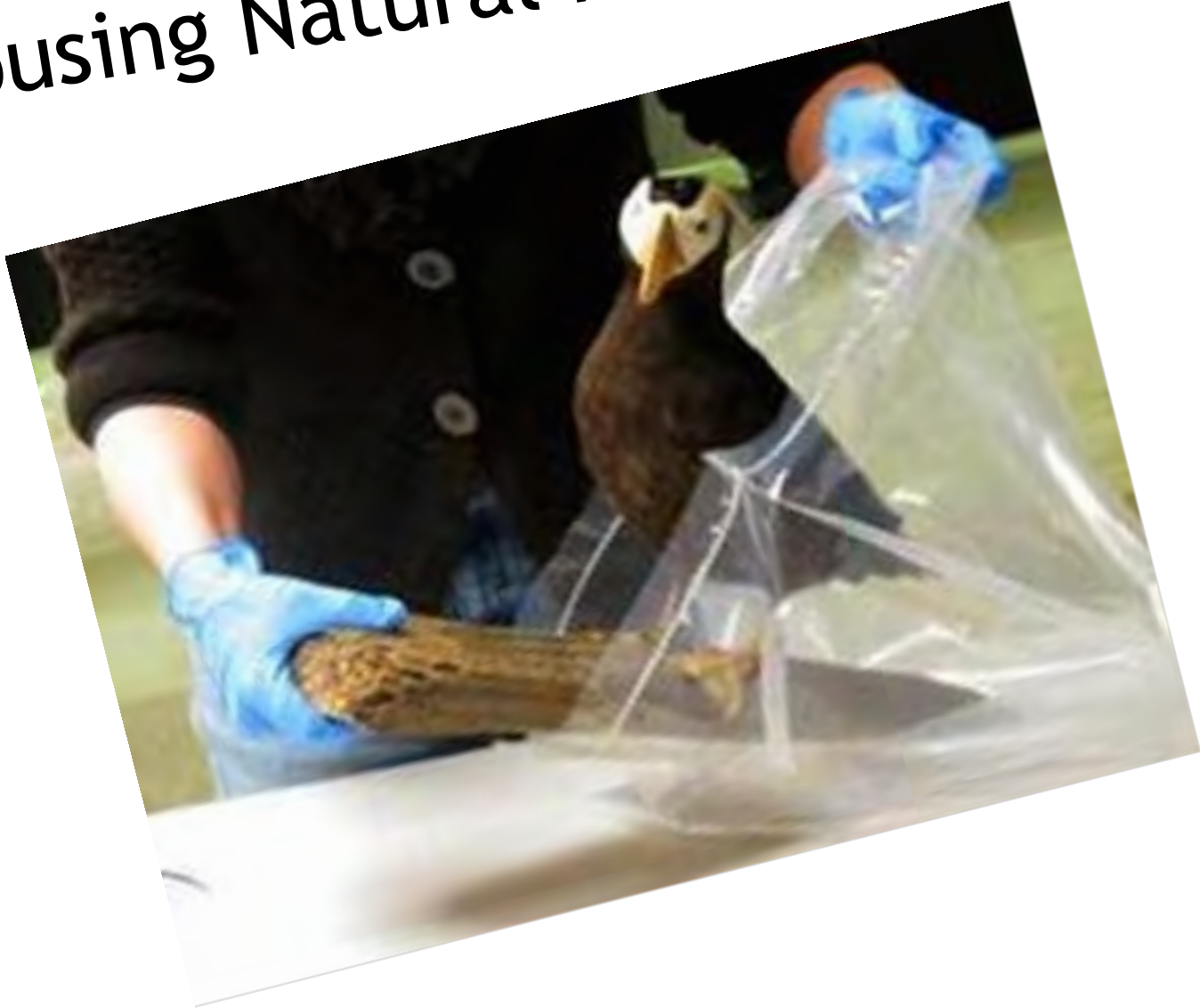
Anchorage Training



Testing in the Galleries



Rehousing Natural History Specimens



Creating Bird Tents

HOOP AND BAG COVER

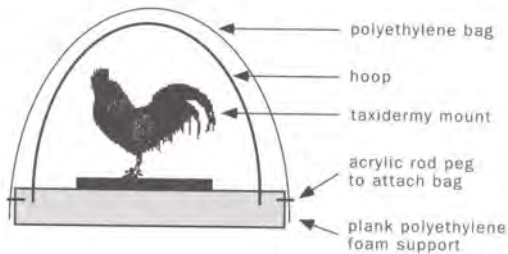
Tamsen Fuller

Purpose

This cover provides environmental and physical protection for small specimens that are not housed in storage cases or containers.

Construction

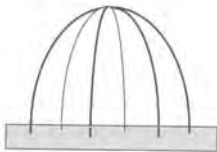
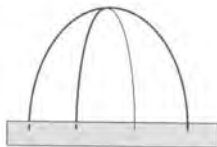
- 1) Cut a piece of polyethylene foam plank that is 2in larger than the specimen on all sides.
- 2) Cut two or three lengths of



Description

The cover consists of a transparent polyethylene bag, supported by two or three plastic rod hoops that are secured to a rectangular or square base (Fig. 1). The physical support and protection is provided by the base and the hoops. The base should be at least two inches bigger than the specimen dimensions on all sides. The size of the base determines the size of the hoops, which in turn, determine the dimensions of the polyethylene membrane or bag. If the system is completely sealed, it can protect against airborne pollutants, rapid environmental changes, and insect pests.

polypropylene welding rod that are long enough to form hoops over the specimen, and to be inserted 1in into the foam. Two hoops provide adequate support; three hoops provide more stability (Fig. 2).



Materials, Tools & Supplies

- Dental floss
- Polyethylene foam plank
- Polypropylene welding rod
- Polyethylene sheeting
- Tacking iron
- Utility knife
- Wire cutters

Tamsen Fuller
325 S.E. Almaden Rd
Gresham, OR 97030 USA
781.300.712 FAX

Illustration: Tamsen Fuller

Figure 1. Components of the hoop and bag cover.



Figure 2. (top) Two-hoop structure. (bottom) Three-hoop structure.